



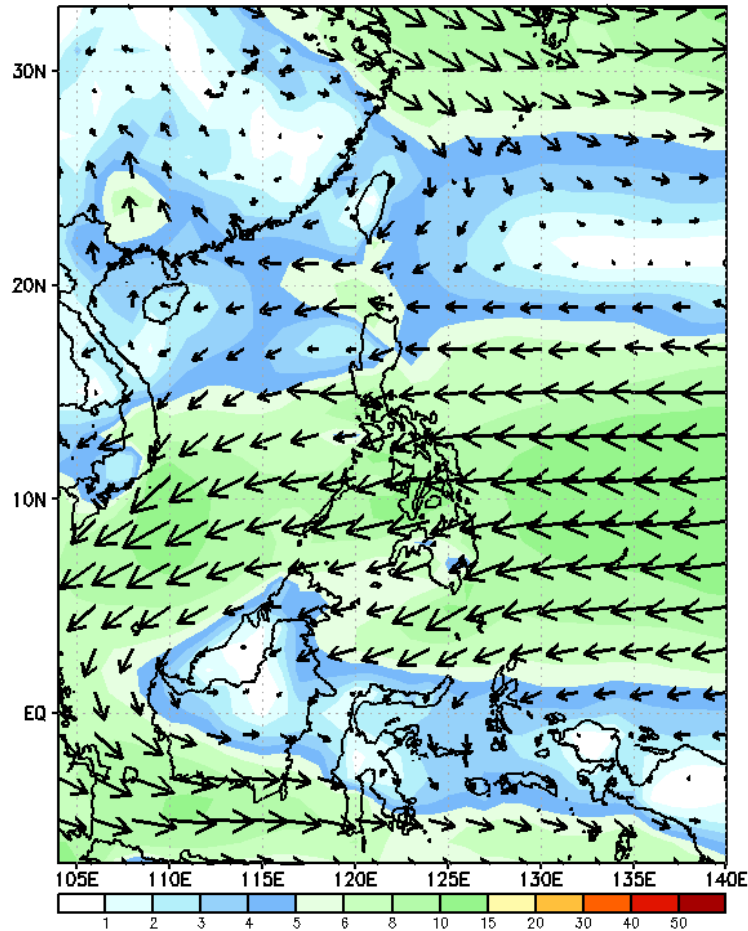
Week 1 & Week 2 Forecast for the Philippines using GEFS Model



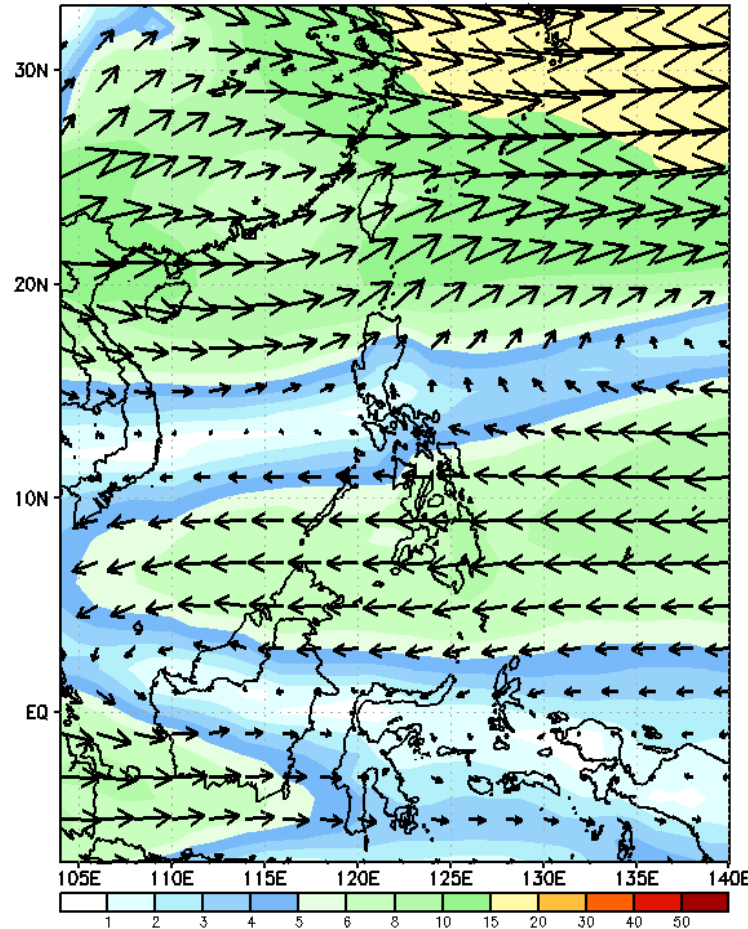
GEFS Week-1 Wind Forecasts:

Week 1: Jan 27- Feb 02, 2025

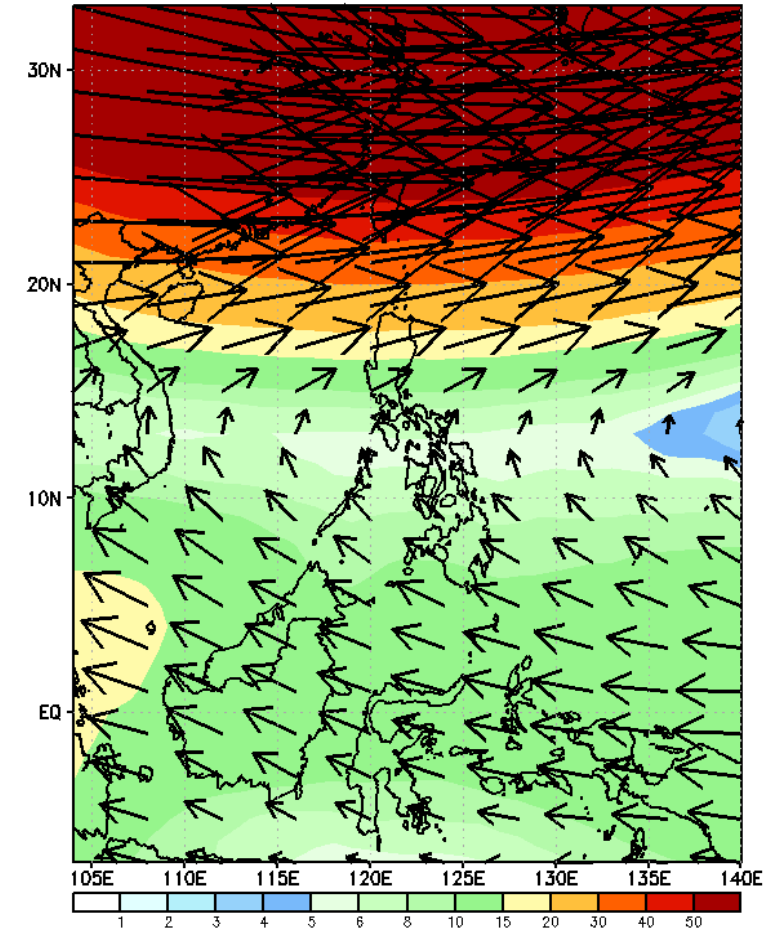
GEFS Week-1 850-hPa Wind Total
Valid: 20250127 - 20250202



GEFS Week-1 700-hPa Wind Total
Valid: 20250127 - 20250202

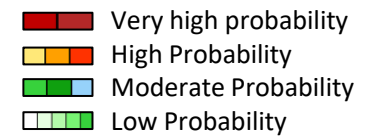


GEFS Week-1 200-hPa Wind Total
Valid: 20250127 - 20250202



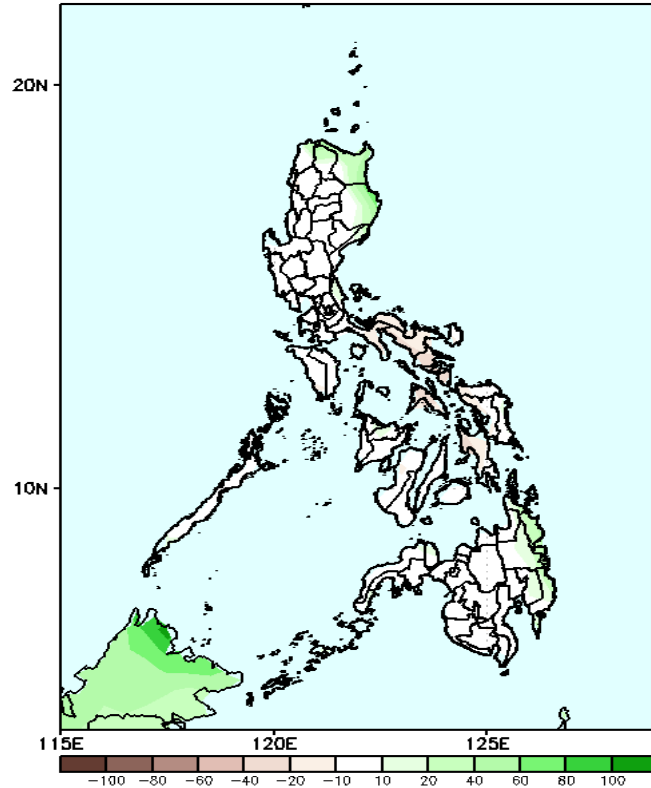
Northeast Monsoon affecting Extreme Northern Luzon while Easterlies affecting the rest of the country during the forecast period

Precipitation Anomaly and Exceedance Probability > 25/50 mm



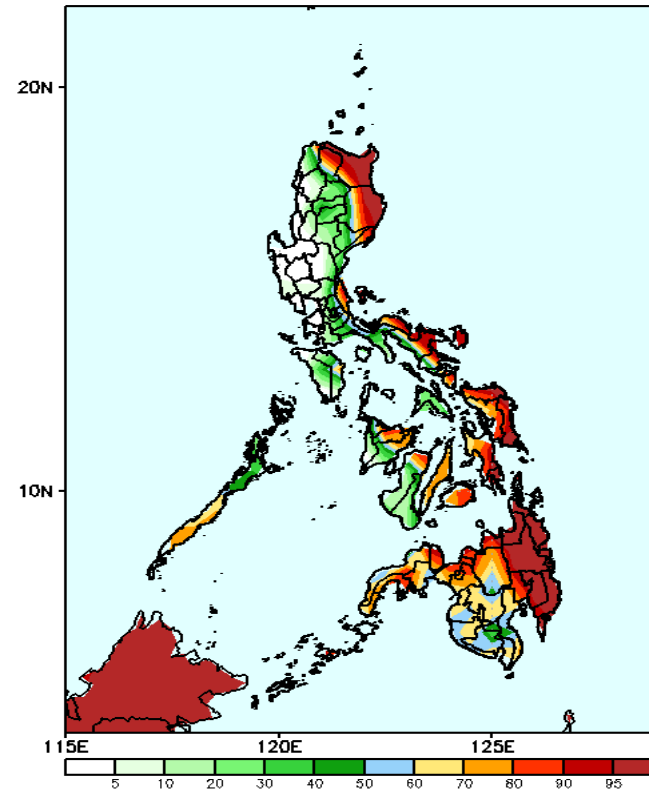
Week 1: Jan 27- Feb 02, 2025

GEFS Week-1 Precip Anomaly
Valid: 20250127 - 20250202



Increase of rainfall of 10-50mm is expected in Apayao, Cagayan, Isabela, and some areas in eastern Mindanao.

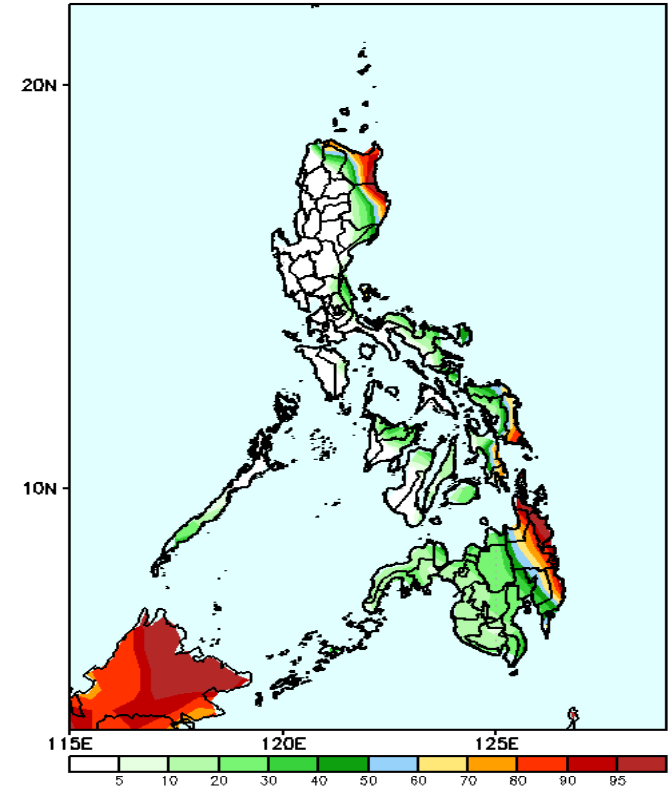
GEFS Week-1 Exceedance Prob. > 25mm
Valid: 20250127 - 20250202



Probability to Exceed 25mm

- High to very high over Batanes, Apayao, Cagayan, Isabela, northern Quezon, most parts of Bicol Region, Eastern Visayas, and eastern Mindanao;
- Moderate to high over Palawan, the rest of CAR, Central Visayas, Capiz, eastern parts of Iloilo, northern parts of Negros Island and the rest of Mindanao;
- Low to Moderate over southern Luzon and the rest of Visayas.
- Low over the rest of Luzon.

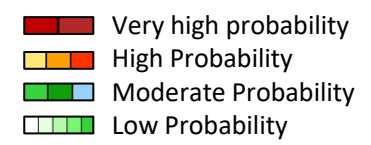
GEFS Week-1 Exceedance Prob. > 50mm
Valid: 20250127 - 20250202



Probability to Exceed 50mm

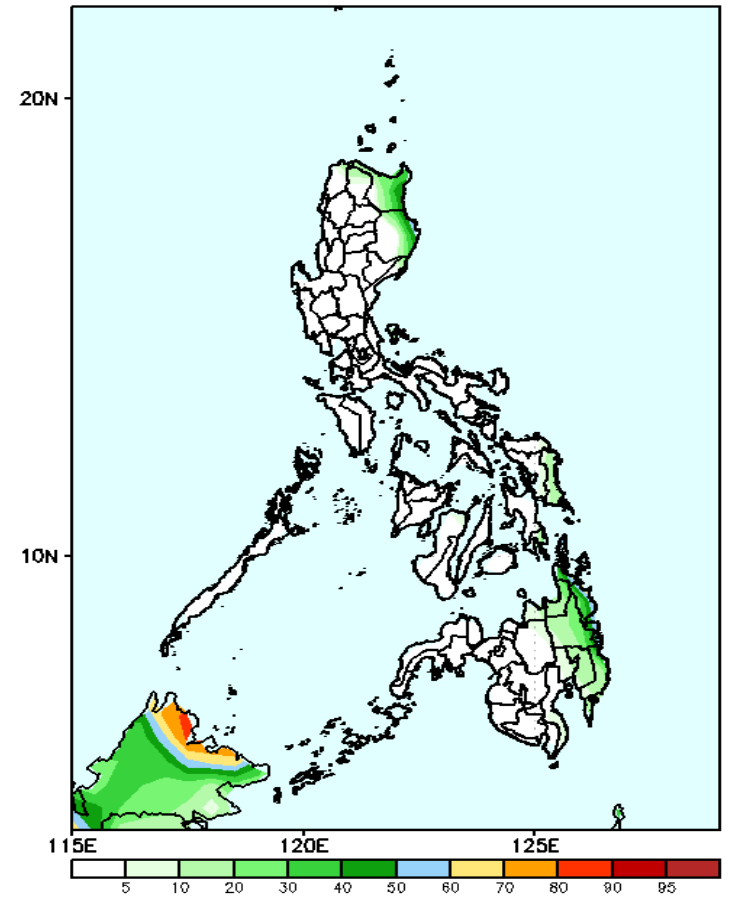
- High to very high over Batanes, eastern part of Cagayan and Isabela, and Surigao Provinces;
- Moderate to high over the northernmost part of Apayao, Northern and Eastern Samar, Southern Leyte and the rest of Eastern Mindanao;
- Low over the rest of the country.

Exceedance Probability > 100/150/200 mm



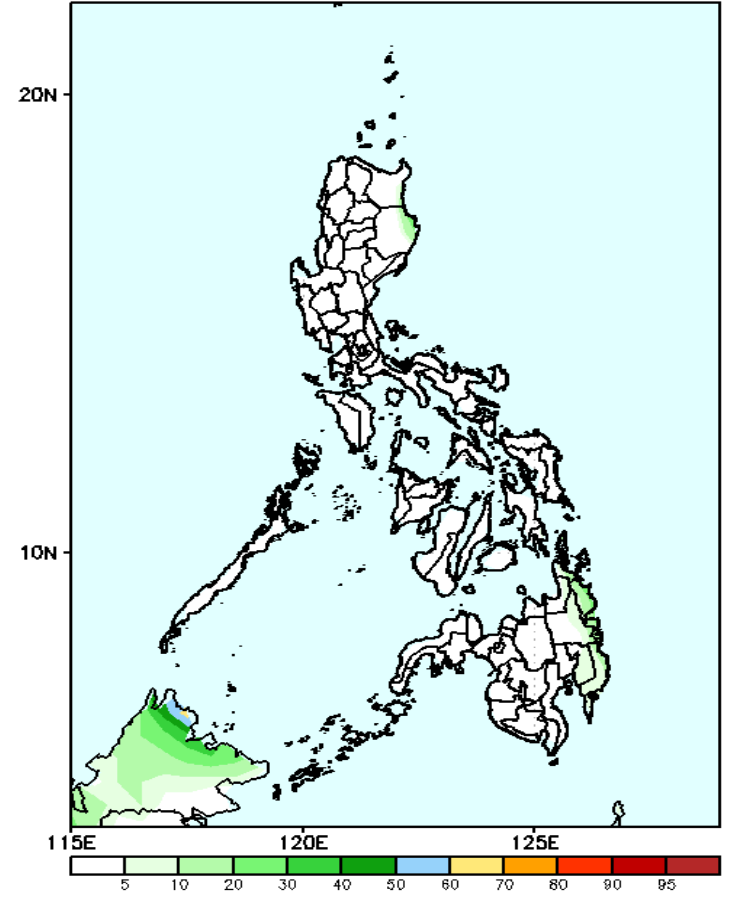
Week 1: Jan 27- Feb 02, 2025

GEFS Week-1 Exceedance Prob. > 100mm
Valid: 20250127 - 20250202



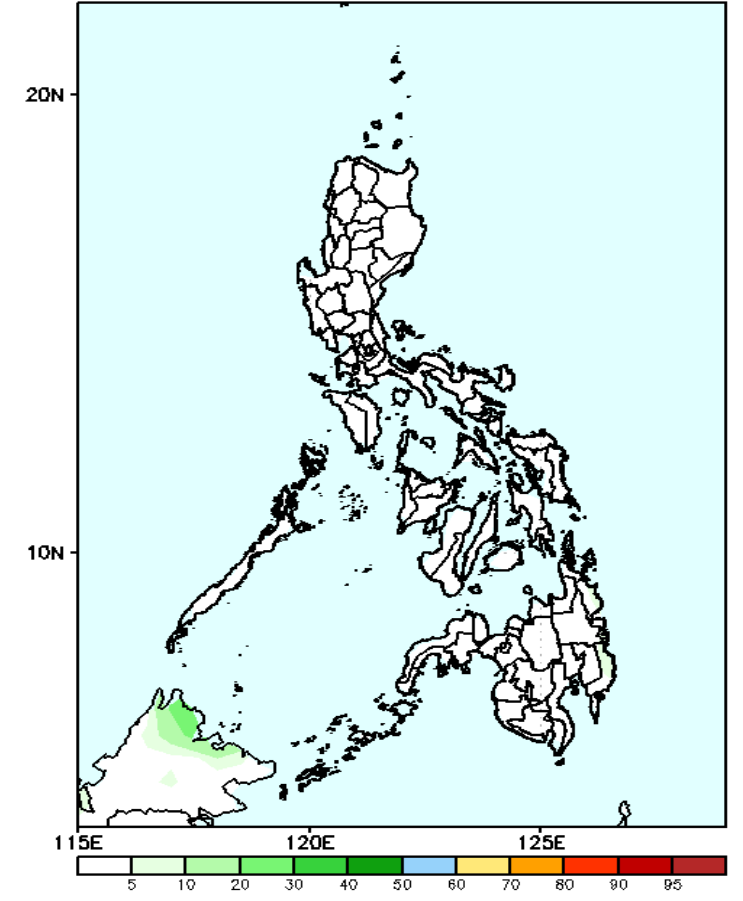
- Probability to Exceed 100mm**
- Moderate over Surigao Provinces;
 - Low over the rest of the country.

GEFS Week-1 Exceedance Prob. > 150mm
Valid: 20250127 - 20250202



- Probability to Exceed 150mm**
- Low across the country.

GEFS Week-1 Exceedance Prob. > 200mm
Valid: 20250127 - 20250202

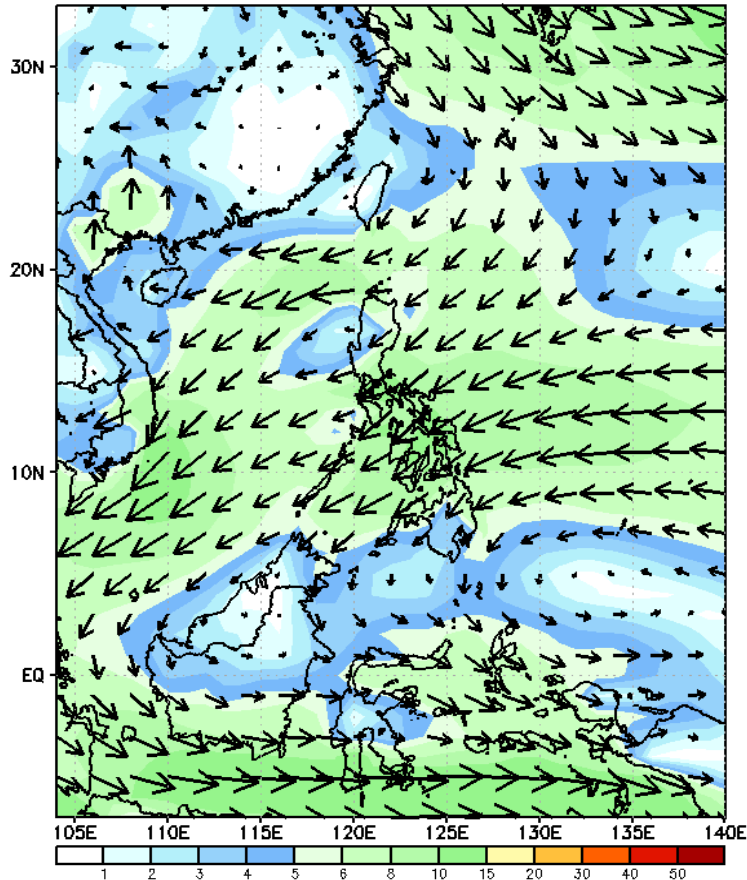


- Probability to Exceed 200mm**
- Low across the country.

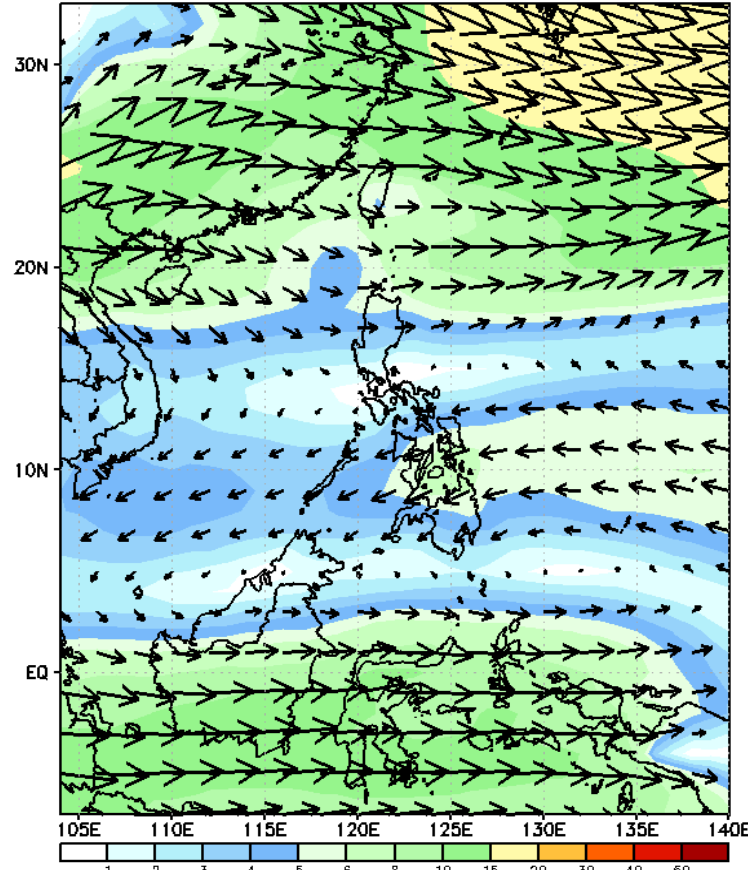
GEFS Week-2 Wind Forecasts:

Week 2: Feb 03-09, 2025

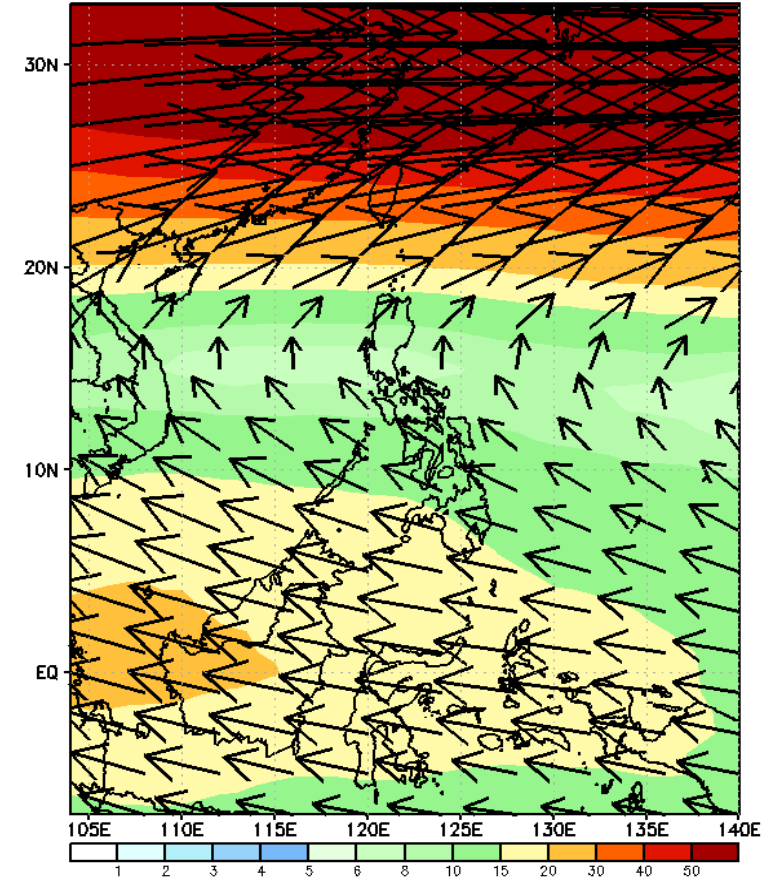
GEFS Week-2 850-hPa Wind Total
Valid: 20250203 - 20250209



GEFS Week-2 700-hPa Wind Total
Valid: 20250203 - 20250209

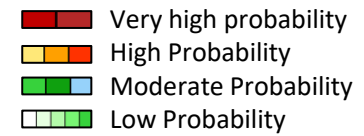


GEFS Week-2 200-hPa Wind Total
Valid: 20250203 - 20250209



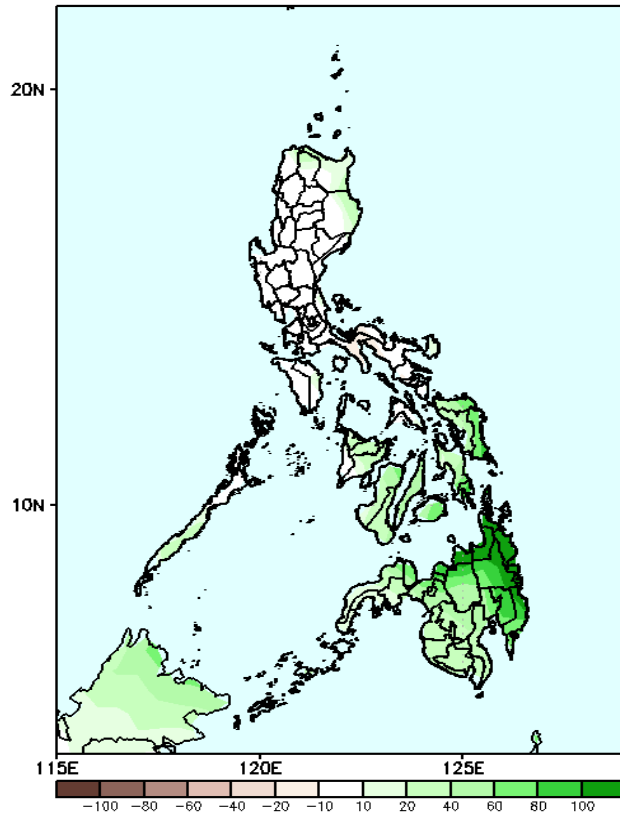
Northeast Monsoon will likely affect the eastern section of Luzon while Easterlies will likely affect the rest of the country during the forecast period

Precipitation Anomaly and Exceedance Probability > 25/50 mm



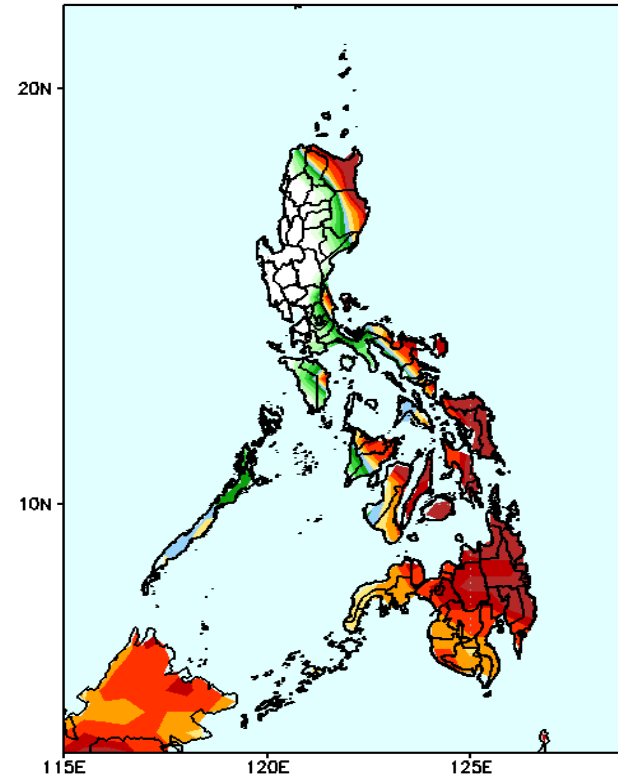
Week 2: Feb 03-09, 2025

GEFS Week-2 Precip Anomaly
Valid: 20250203 - 20250209



Increase of rainfall of 10-60mm is expected in some areas in Apayao, Cagayan, Isabela, southern Palawan, most parts of Visayas and western Mindanao; 60-100Qmm in eastern and northern parts of Mindanao.

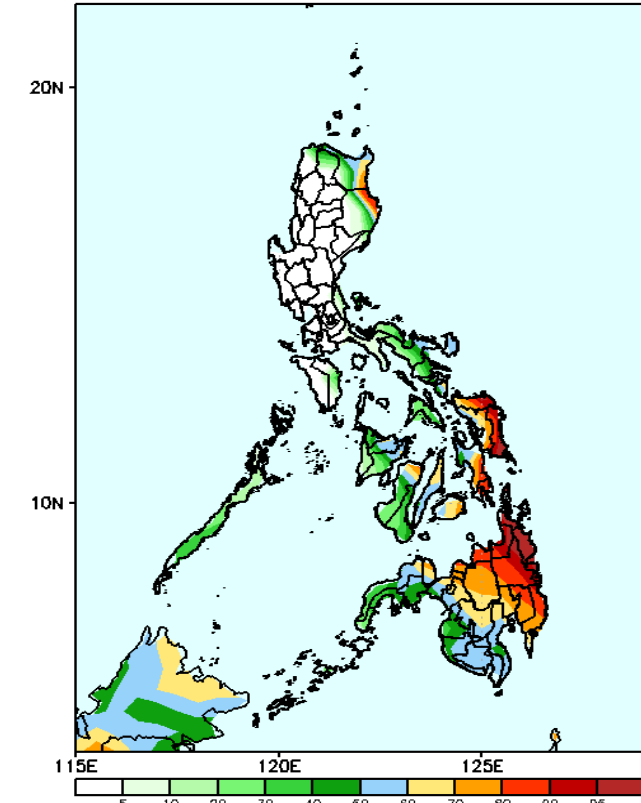
GEFS Week-2 Exceedance Prob. > 25mm
Valid: 20250203 - 20250209



Probability to Exceed 25mm

- High to very high over Batanes, Cagayan, eastern parts of Apayao and Isabela, northern Quezon, most parts of Bicol Region, Visayas and Mindanao;
- Moderate to high over Palawan, southern Luzon, and western parts of Panay Island
- Low over the rest of Luzon.

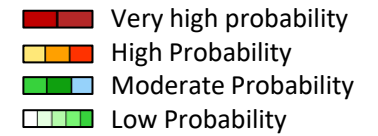
GEFS Week-2 Exceedance Prob. > 50mm
Valid: 20250203 - 20250209



Probability to Exceed 50mm

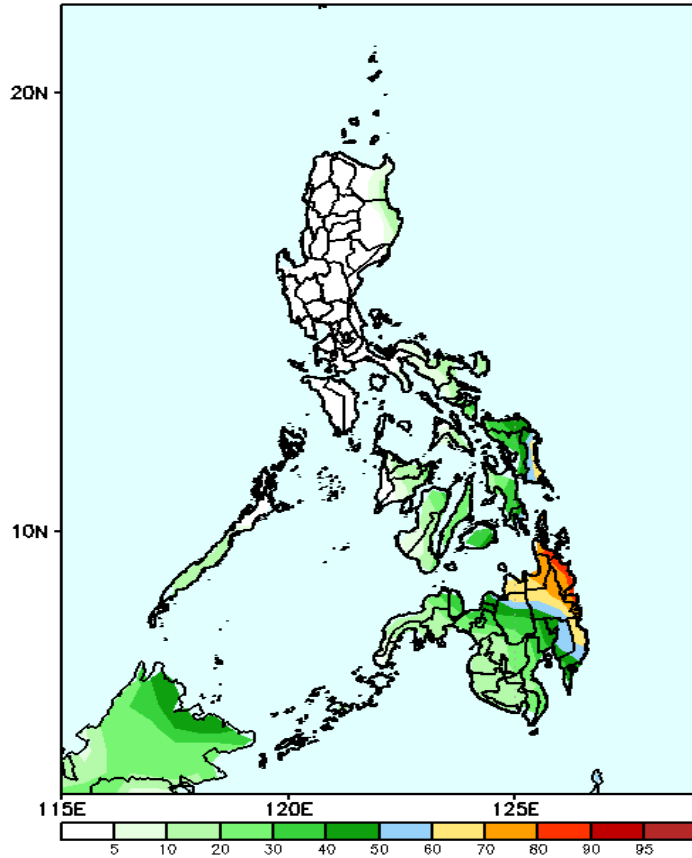
- High to very high over Northern and Eastern Samar and Eastern Mindanao;
- Moderate to high over Batanes, the easternmost part of Cagayan and Isabela, eastern portion of Bicol Region, northern part of Panay and Negros Occidental, Central Visayas, and the rest of Eastern Visayas and Mindanao;
- Low to moderate over the rest of Bicol Region and Visayas;

Exceedance Probability > 100/150/200 mm



Week 2: Feb 03-09, 2025

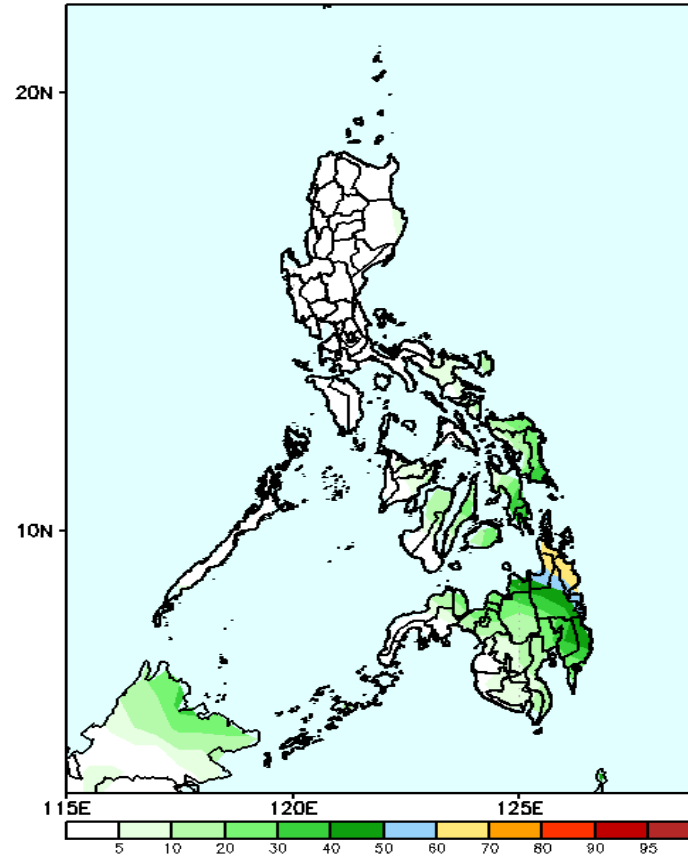
GEFS Week-2 Exceedance Prob. > 100mm
Valid: 20250203 - 20250209



Probability to Exceed 100mm

- Moderate to high over Samar Provinces, Eastern Mindanao, Misamis Oriental and the northeastern part of Bukidnon;
- Low to moderate over the rest of Visayas and Mindanao;
- Low over Luzon.

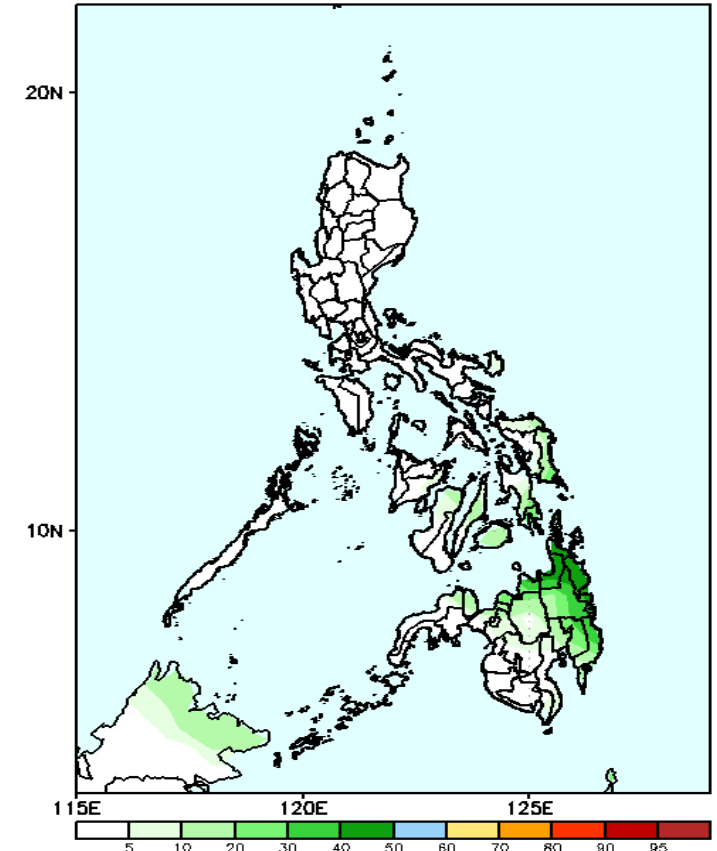
GEFS Week-2 Exceedance Prob. > 150mm
Valid: 20250203 - 20250209



Probability to Exceed 150mm

- Moderate to high over Surigao Provinces and Agusan del Norte;
- Low to moderate over Eastern Visayas and the rest of Mindanao;
- Low over the rest of the country.

GEFS Week-2 Exceedance Prob. > 200mm
Valid: 20250203 - 20250209

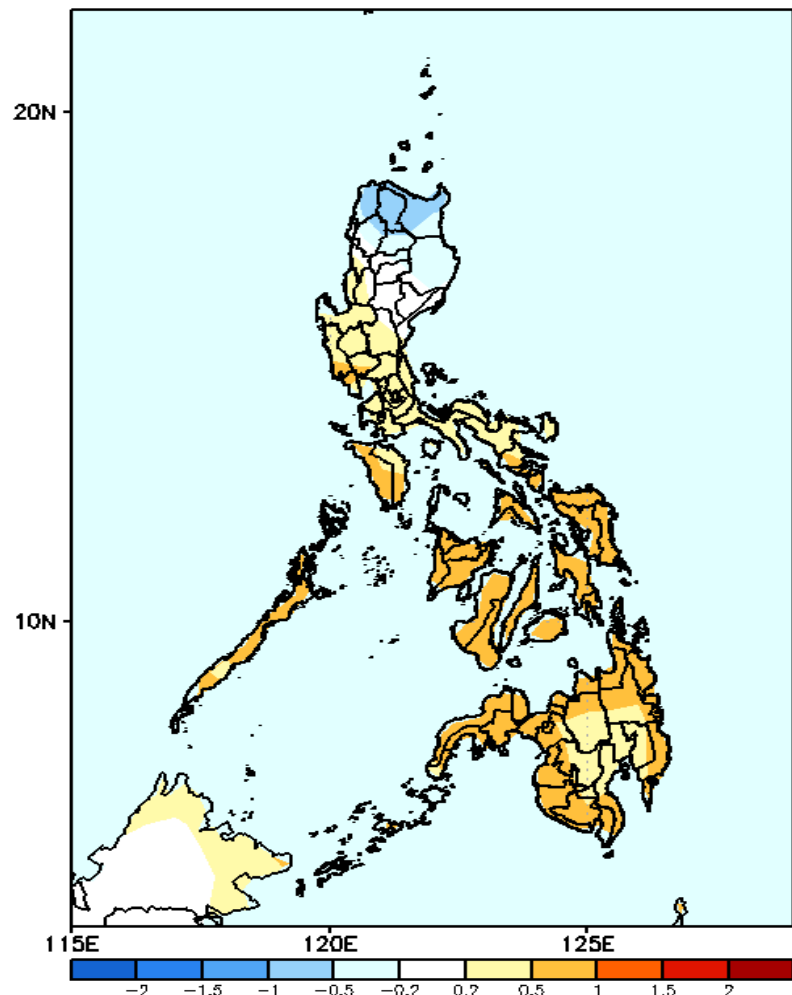


Probability to Exceed 200mm

- Low to moderate over Eastern Mindanao;
- Low over the rest of the country.

GEFS Week-1 & 2 Forecasts: T2m Anomaly

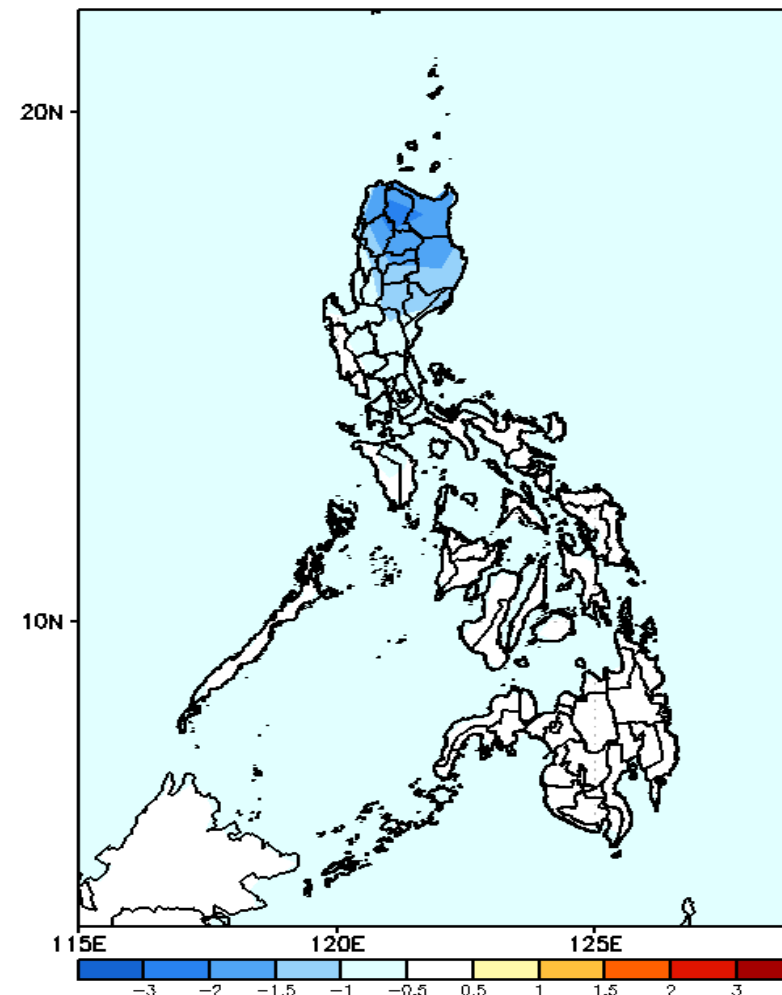
GEFS Week-1 T2m Anomaly
Valid: 20250127 - 20250202



2m Temperature Week 1: Jan 27- Feb 02, 2025

Slightly warmer to warmer than average surface air temperature will likely be experienced in most parts of the country except in northern Luzon where near to slightly cooler than average surface air temperature is expected.

GEFS Week-2 T2m Anomaly
Valid: 20250203 - 20250209



2m Temperature Week 2: Feb 03-09, 2025

Cooler than average surface air temperature will likely be experienced in Northern Luzon while near average surface air temperature is expected for the rest of the country.